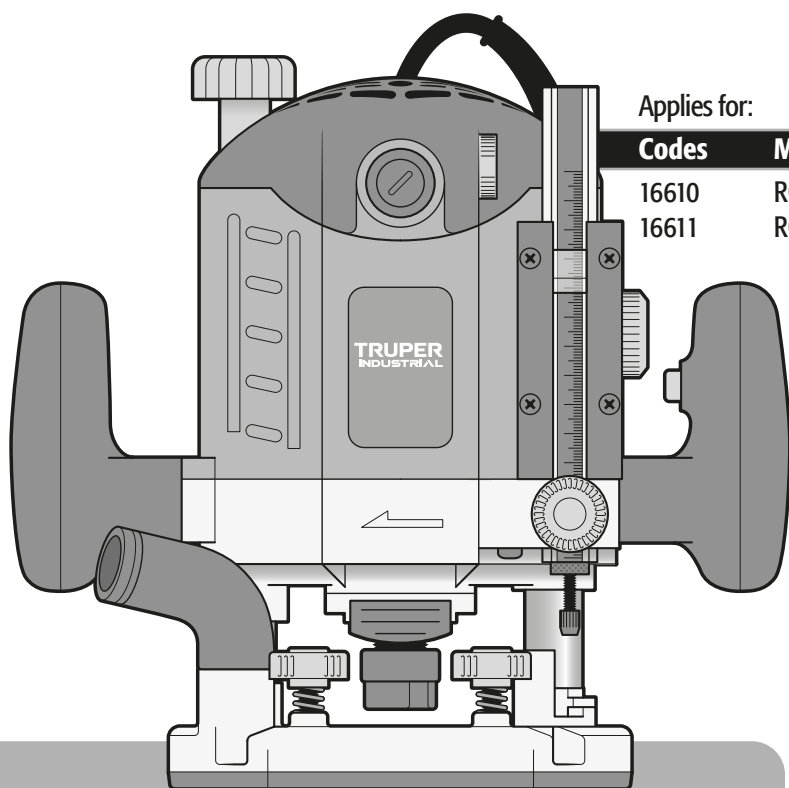


Manual

Plunge router

Power
1 3/4 Hp **2 1/2 Hp**
ROU-N3 ROU-NX2



Applies for:


Codes	Models
16610	ROU-N3
16611	ROU-NX2

ROU-N3 / ROU-NX2



Read the user's manual thoroughly
before operating this tool.



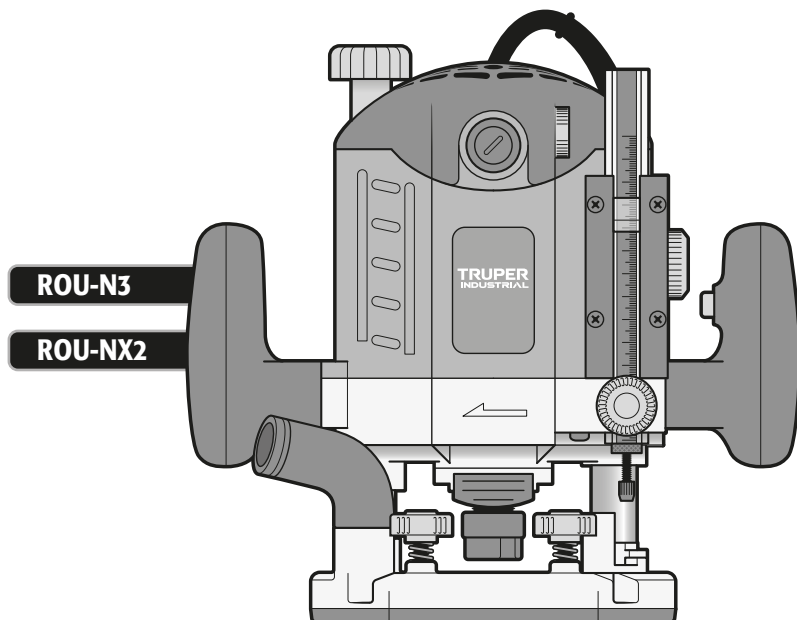
Technical data	3
Power requirements	3
 General power tool safety warnings	4
 Safety warnings for routers	5
Parts	5
Preparation	6
Start up	7
Maintenance	9
Accessories and spare parts	10
Notes	10
Authorized service centers	11
Warranty policy	12

CAUTION

To gain the best performance of the tool, prolong the duty life, make the Warranty valid if necessary, and to avoid hazards of fatal injuries please read and understand this manual before using the tool.

Keep this manual for future references.

The illustrations in this manual are for reference only. They might be different from the real tool.



Technical Data

TRUPER®
INDUSTRIAL

ROU-N3		ROU-NX2
Code	16610	16611
Description	Router	
Voltage	127 V~	
Frequency	60 Hz	
Current	9.4 A	14.2 A
Power	1 3/4 Hp	2 1/2 Hp
Speed	9 000 - 28 000 RPM	8 000 - 23 000 RPM
Maximum drill capacity	2"	2 1/4"
Depth adjustment capacity	0 - 1 5/16"	0 - 2 1/8"
Stop gradual tower	8	
Duty cycle	50 minutes work per 20 minutes idle. Maximum daily 6 hours.	
Conductors	16 AWG x 2C with insulating temperature of 221 °F	14 AWG x 2C with insulating temperature of 221 °F
Insulation	Class II	IP Grade IP20

Power cord grips used in this product: Type "Y".
Build quality: Reinforced Insulation.
Thermal insulation on motor winding: Class A.

⚠ WARNING Avoid the risk of electric shock or severe injury. When the power cable gets damaged it should only be replaced by the manufacturer or at a TRUPER Authorized Service Center. The build quality of the electric insulation is altered if spills or liquid gets into the tool while in use. Do not expose to rain, liquids and/or dampness.

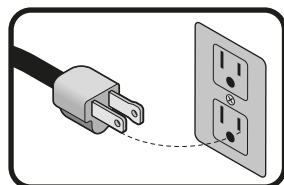
⚠ WARNING Before gaining access to the terminals all power sources should be disconnected.



Power Requirements

⚠ WARNING Tools with double insulation and reinforced insulation are equipped with a polarized plug (one prong is wider than the other). This plug will only fit in the right way into a polarized outlet. If the plug cannot be introduced into the outlet, reverse the plug. If it still doesn't fit, call a qualified electrician to install for you a polarized outlet. Do not alter the plug in any way. Both insulation types eliminates the need of both a grounded third power cord with three prongs or a grounded power connection.

⚠ WARNING When using an extension cable, verify the gauge is enough for the power that your product needs. A lower gauge cable will cause voltage drop in the line, resulting in power loss and overheating. The following table shows the right size to use depending on cable's length and the ampere capability shown in the tool's nameplate. When in doubt use the next higher gauge.



Ampere Capacity	Number of Conductors	Extension gauge	
		from 5.9 ft to 49.2 ft	higher than 49.2 ft
from 0 A and up to 10 A	3 (one grounded)	18 AWG(*)	16 AWG
from 10 A and up to 13 A		16 AWG	14 AWG
from 13 A and up to 15 A		14 AWG	12 AWG
from 15 A and up to 20 A		8 AWG	6 AWG

* It is safe to use only if the extensions have a built-in artifact for over current protection.

AWG = American Wire Gauge. Reference: NMX-I-195-ANCE

⚠ WARNING When operating power tools outdoors, use a **VOLTECK** grounded extension cable labeled "For Outdoors Use". These extensions are specially designed for operating outdoors and reduce the risk of electric shock.



ENGLISH

3



General power tool safety warnings



⚠ WARNING! Read carefully all safety warnings and instruction listed below. Failure to comply with any of these warnings may result in electric shock, fire and / or severe damage. **Save all warnings and instructions for future references.**

Work area

Keep your work area clean, and well lit.

Cluttered and dark areas may cause accidents.



Never use the tool in explosive atmospheres, such as in the presence of flammable liquids, gases or dust.

Sparks generated by power tools may ignite the flammable material.



Keep children and bystanders at a safe distance while operating the tool.

Distractions may cause losing control.



Electrical Safety

The tool plug must match the power outlet. Never modify the plug in any way. Do not use any adapter plugs with grounded power tools.

Modified plugs and different power outlets increase the risk of electric shock.



Avoid body contact with grounded surfaces, such as pipes, radiators, electric ranges and refrigerators.

The risk of electric shock increases if your body is grounded.

Do not expose the tool to rain or wet conditions.

Water entering into the tool increases the risk of electric shock.

Do not force the cord. Never use the cord to carry, lift or unplug the tool. Keep the cord away from heat, oil, sharp edges or moving parts.

Damaged or entangled cords increase the risk of electric shock.

When operating a tool outdoors, use an extension cord suitable for outdoor use.

Using an adequate outdoor extension cord reduces the risk of electric shock.

If operating the tool in a damp location cannot be avoided, use a ground fault circuit interrupter (GFCI) protected supply.

Using a GFCI reduces the risk of electric shock.

Personal safety

Stay alert, watch what you are doing and use common sense when operating a tool. Do not use a power tool while you are tired or under the influence of drugs, alcohol or medication.

A moment of distraction while operating the tool may result in personal injury.

Use personal protective equipment. Always wear eye protection.

Protective equipment such as safety glasses, anti-dust mask, non-skid shoes, hard hats and hearing protection used in the right conditions significantly reduce personal injury.



Prevent unintentional starting up. Ensure the switch is in the "OFF" position before connecting into the power source and / or battery as well as when carrying the tool.

Transporting power tools with the finger on the switch or connecting power tools with the switch in the "ON" position may cause accidents.

Remove any wrench or vice before turning the power tool on.

Wrenches or vices left attached to rotating parts of the tool may result in personal injury.

Do not overreach. Keep proper footing and balance at all times.

This enables a better control on the tool during unexpected situations.

Dress properly. Do not wear loose clothing or jewelry. Keep hair, clothes and gloves away from the moving parts.

Loose clothes, jewelry or long hair may get caught in moving parts.



If you have dust extraction and recollection devices connected onto the tool, inspect their connections and use them correctly. Using these devices reduce dust-related risks.

Power Tools Use and Care

Do not force the tool. Use the adequate tool for your application.

The correct tool delivers a better and safer job at the rate for which it was designed.



Do not use the tool if the switch is not working properly.

Any power tool that cannot be turned ON or OFF is dangerous and should be repaired before operating.

Disconnect the tool from the power source and / or battery before making any adjustments, changing accessories or storing.

These measures reduce the risk of accidentally starting the tool.

Store tools out of the reach of children. Do not allow persons that are not familiar with the tool or its instructions to operate the tool.

Power tools are dangerous in the hands of untrained users.



Service the tool. Check the mobile parts are not misaligned or stuck. There should not be broken parts or other conditions that may affect its operation. Repair any damage before using the tool.

Most accidents are caused due to poor maintenance to the tools.



Keep the cutting accessories sharp and clean.

Cutting accessories in good working conditions are less likely to bind and are easier to control.

Use the tool, components and accessories in accordance with these instructions and the projected way to use it for the type of tool when in adequate working conditions.

Using the tool for applications different from those it was designed for, could result in a hazardous situation.

Service

Repair the tool in a TRUPER Authorized Service Center using only identical spare parts.

This will ensure that the safety of the power tool is maintained.



This tool is in compliance with the Official Mexican Standard (NOM - Norma Oficial Mexicana).

Safety warnings for routers

TRUPER[®]
INDUSTRIAL

⚠ WARNING • Install only bits with the right size into the chuck.

⚠ CAUTION • Do not try to start the router when the bit is making contact with the work piece.

• Allow the router to reach the desired speed before starting the job.

⚠ CAUTION • Do not force the router to cut the work piece too fast.

• Make several passes with the router with progressive depths when the job requires removing a lot of material or when using bits with a large diameter.

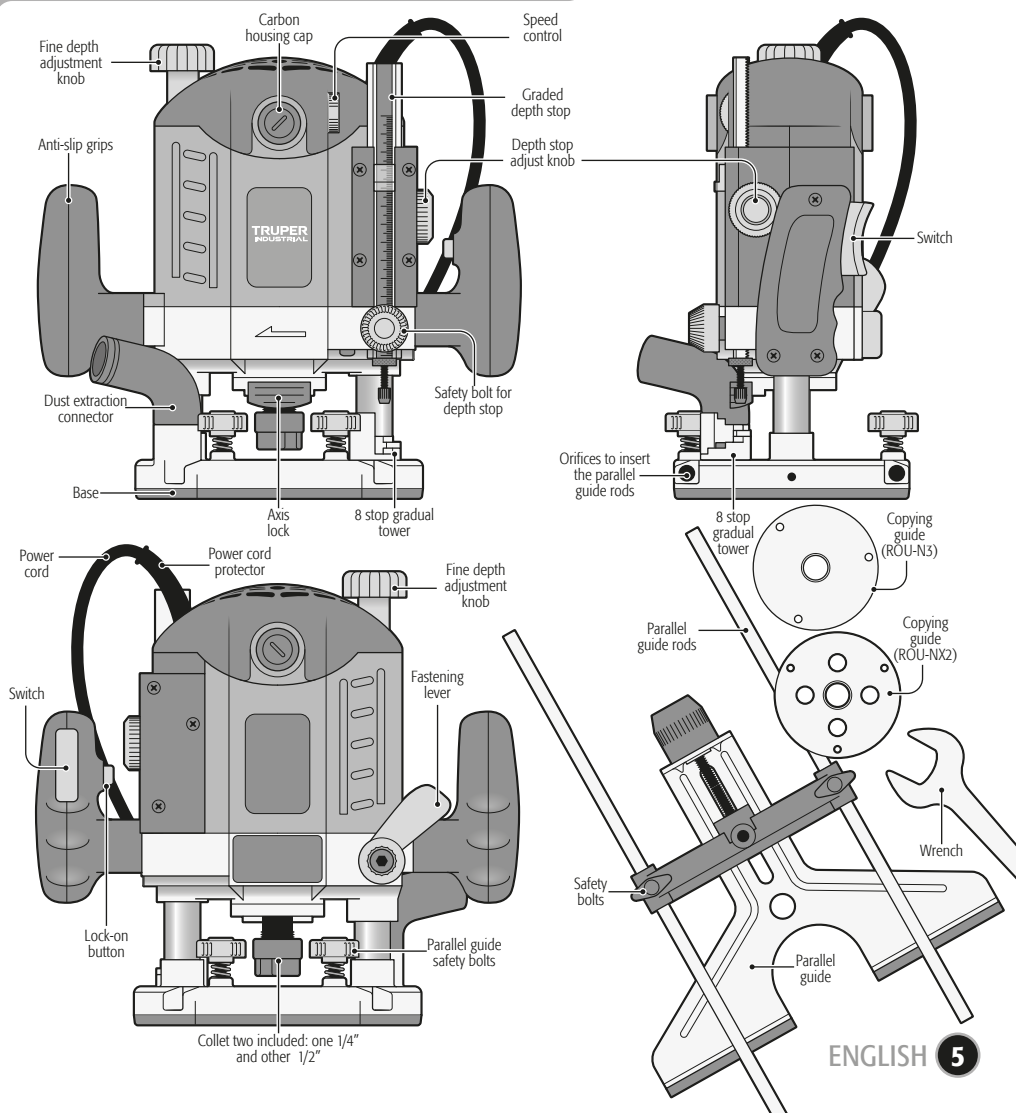
⚠ CAUTION • Allow the bit to stop completely before removing any cut or stuck material around the bit area.

• Adopt a safe distance that allows the lowering action to be carried out smoothly.

⚠ WARNING • Before maintenance, removing or installing bits, parallel guide or dust extractor adapter, disconnect the tool from the power source.

⚠ CAUTION • Hold the tool with both hands and by the respective handles to gain an optimum control.

Parts



Dust extractor installation (optional)

- Before setting the bit into the chuck install the dust extractor as shown in the illustration.

Copying guide installation (optional)

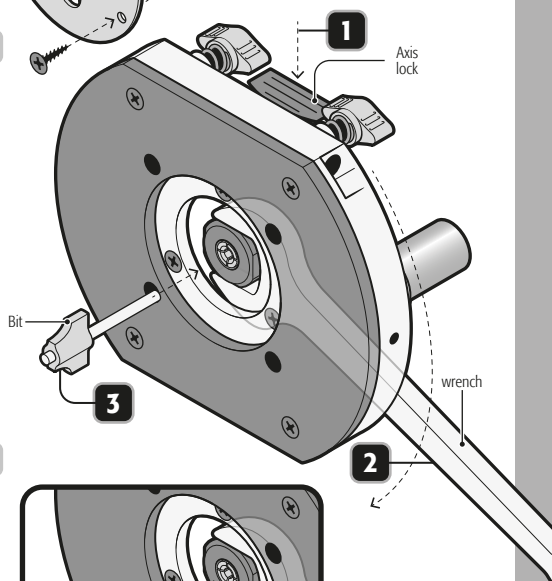
- Before setting the bit into the chuck install the copying guide as shown in the illustration.

Copying guide

(Reference image with accessories for ROU-NX2, ROU-N3 very similar)

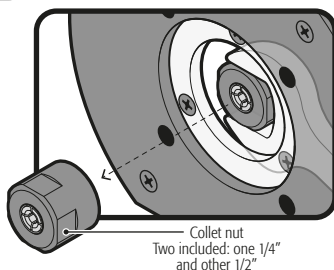
Bit installation

- Disconnect the router from the power source.
- Place the router sideways onto the table with the base pointing towards you.
- Press the axis lock to prevent it turns. **(1)**
- Without releasing the axis lock use the wrench to release the collet nut, by turning it to the left. **(2)**
- Set the bit **(3)** and tighten the collet nut, by turning it to the right.
- Release the axis lock and double-check the bit is perfectly installed before turning on the router.
- To remove the bit just press the axis lock and using the wrench loosen the nut.



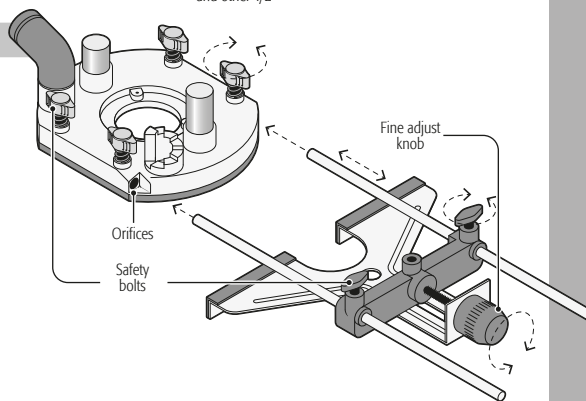
Collet nut replacement

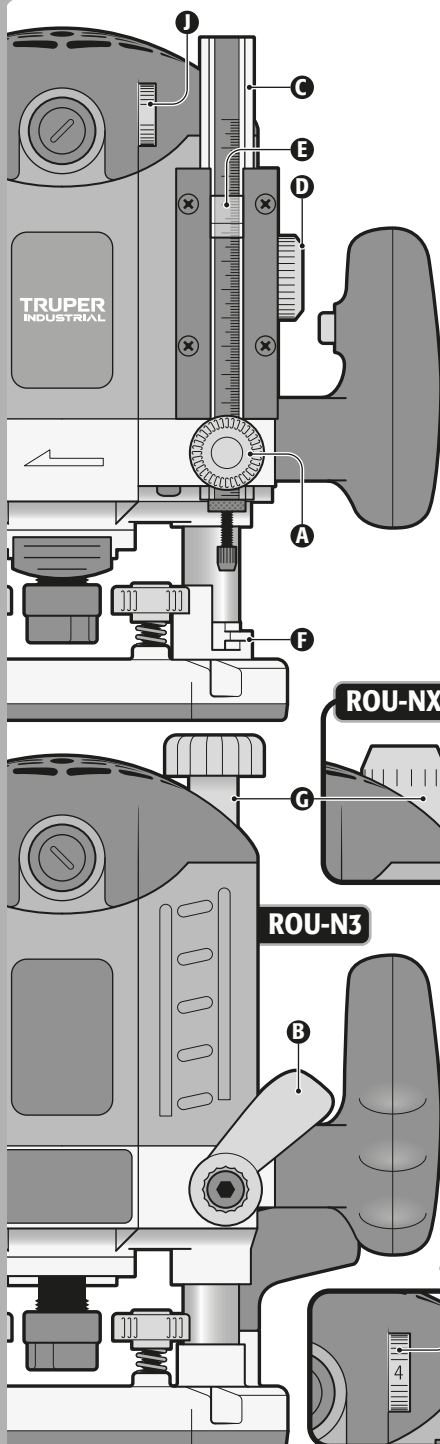
- Disconnect the router from the power source.
- Place the router sideways onto the table with the base pointing towards you.
- Remove the bit as previously explained.
- Using the wrench remove the collet from the threaded axis.
- Set the collet with the required diameter onto the threaded axis.



Parallel guide installation and adjust

- Slide the parallel guide rods into the orifices in the router base and tighten the safety bolts.
- Slide the parallel guide in the rods up to the desired distance and tighten the safety bolts.
- To get a fine adjust of the guide distance turn the fine adjust knob.





Depth stop adjustment

- Loosen the safety bolt **(A)** and release the fastening lever **(B)**.
- Push the machine totally downwards so the router touches the work piece and secure the fastening lever **(B)**.
- Set down the graded depth stop **(C)** as much as possible using the adjust disc **(D)**.
- If necessary move the indicator **(E)** to set it on zero value in the scale.

Cut depth adjustment

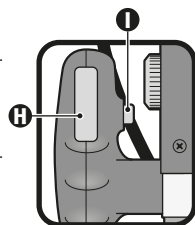
- Loosen the safety bolt **(A)** and release the fastening lever **(B)**.
- Adjust the stop **(C)** into the desired cutting depth using the scale. Tighten the safety bolt **(A)**.
- Slide the machine downwards until it comes across with the gradual tower **(F)**.
- To fine adjust the cutting depth, turn the fine adjusting knob **(G)**.
- Turn the adjusting nut for variable cut depth.
- Secure the fastening lever **(B)**.

Quick cut depth selection

- It is possible to select among 8 pre-adjusted cut depth positions, using the gradual tower **(F)**.
- Raise the depth gradual tower from its fixed points and turn it until it matches one of its 8 stops with the graded depth stop **(C)**.
- Double-check that the depth gradual tower is secured in the fixing point.
- Follow the instructions given before in "Cut Depth Adjustment".

Turn On and operation control

- Intermittent operation:
Connect the plug into the power outlet.
Press switch **(H)** to start the router.
To stop using it, release the switch.
- Continuous operation:
Connect the plug into the power outlet.
Press switch **(H)** and block it pressing the lock-on button **(I)**.
To stop, press and then release the switch.

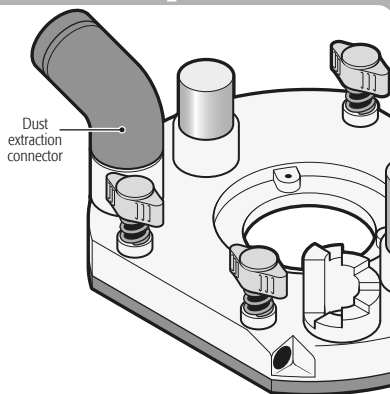


Bit speed adjustment

- Turn the speed adjust disc **(J)** to increase or decrease the bit speed.

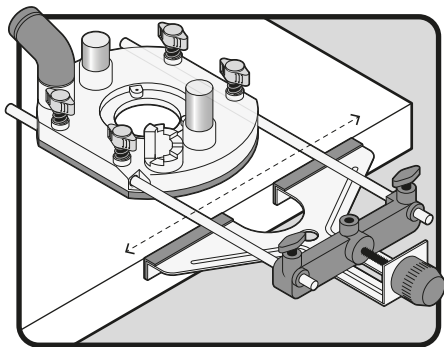
Dust extraction connector

- The dust extraction connector use with an external vacuum cleaner is useful to get rid of dust from the worktable.
- Connect the dust extractor (as indicated in "Dust Extractor Installation", page 6).
- Insert the dust extraction connector into the corresponding orifice in the router base. Slide into the hose of a domestic vacuum cleaner. Use an adapter if necessary.



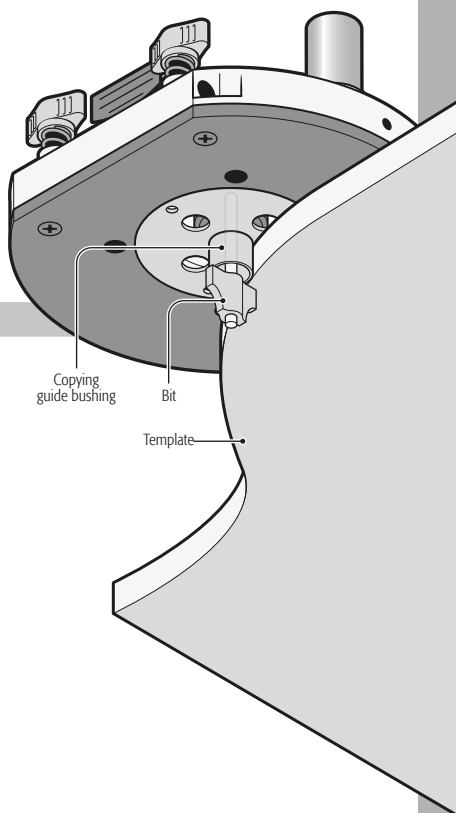
Parallel guide use

- Fix the parallel guide into the router base (page 6) and support it onto the work piece edge to make straight cuts.



Copying guide use

- Fix the Copying guide onto the router base (page 6).
- Use a template between the router base and the work piece.
- Support the copying guide bushing on the template edge. Make the cut following the template shape.



Additional advise

- This tool is specifically designed to work on wood and plastic.
- For deeper cutting depths make various superficial cuts with gradual increments.
- Rest the base of the router on the workpiece (avoiding contact of the bit with the material to be worked on) before turning it on.
- Guide the machine in a constant speed through the work piece. Do not apply pressure on the bit.
- Give time to the machine in order to cut the work piece.
- When cutting along edges double-check you are guiding the tool counterclockwise to the bit rotation. Otherwise the tool may shoot out unexpectedly.
- Do not operate the tool upside down, this condition will affect its performance.

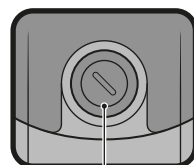
- Double-check the vent slots in the machine are free of sawdust, chips, etc.
- Keep the guides clean and lubricated with all-purpose light oil.

Service

- Service for the tools shall only be carried out in a TRUPER Authorized Service Center.
- If machine repair services are performed by personnel not authorized by TRUPER, the product warranty will be invalidated.

Carbon brush replacement

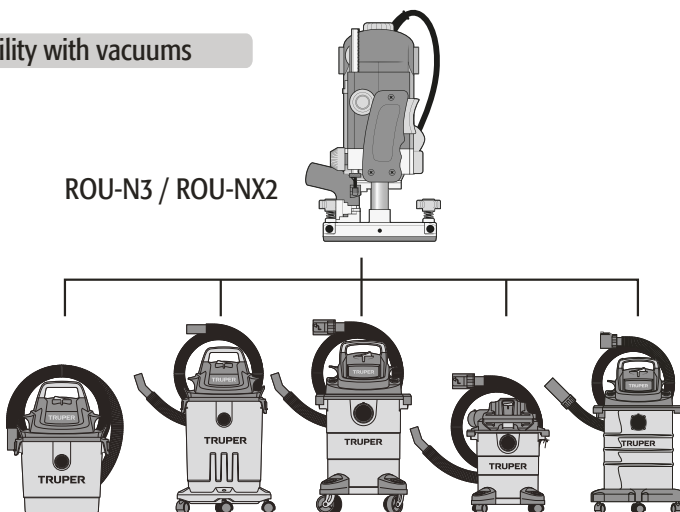
- It is necessary to replace with new carbon brushes, worn (or burnt, broken or smaller than 0.19" long carbon brushes).
- Anytime carbon brushes need replacement, always replace both carbons.
- Remove worn carbon brushes from the carbon brush housing and remove accumulated dust with compressed air.
- Set the new carbon brushes reversing the order. Carbon brushes should easily fall into the carbon brush housing.
- After setting the new carbon brushes, let the router running unloaded for a couple minutes to get a better adjust.
- Use only original TRUPER spare carbons specifically designed with the hardness and electric resistance adequate for each type of motor. Carbons that are out of specification could damage the motor



Carbon brush cap

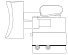

Compatibility with vacuums

ROU-N3 / ROU-NX2







Vacuums of 3 gal (11 L), 4 gal (15 L), 5 gal (19 L) y 6 gal (23 L)





Available accessories and replacement parts list for ROU-NX2 and ROU-N3

Component	Code	Part	Description
	101697	INT-ROU-N	Switch
	101699	GUIA-ROU-N	Parallel guide rods

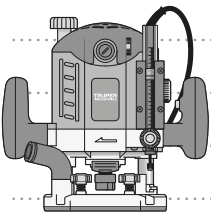
Available accessories and replacement parts list for ROU-NX2

Component	Code	Part	Description
	101700	COL12-ROU-NX2	Collet 1/2"
	101701	COL14-ROU-NX2	Collet 1/4"
	102781	LL-ROU-NX2	Spanner
	18603	CB-ROU-NX2	Carbon brushes

Available accessories and replacement parts list for ROU-N3

Component	Code	Part	Description
	101703	COL12-ROU-N3	Collet 1/2"
	101704	COL14-ROU-N3	Collet 1/4"
	101702	LL-ROU-N	Spanner
	18657	CB-ROU-N3	Carbon brushes

Notes



Authorized Service Centers

TRUPER®
INDUSTRIAL

In case of any problem contacting a TRUPER® Authorized Service Center, please see our webpage **WWW.TRUPER.COM** to get an updated list, or call our toll-free numbers **800 690-6990** or **800 018-7873** to get information about the nearest Service Center.

AGUASCALIENTES **DE TODO PARA LA CONSTRUCCIÓN**
GRAL. BARRAGÁN #1201, COL. GREMIAL, C.P. 20030,
AGUASCALIENTES, AGS. TEL.: 449 994 0537

BAJA CALIFORNIA **SUCURSAL TIJUANA**
AV. LA ENCANTADA, LOTE #5, PARQUE INDUSTRIAL EL
FLORIDO II, C.P. 22244, TIJUANA, B.C.
TEL.: 664 969 5100

BAJA CALIFORNIA SUR **FIX FERRETERÍAS**
FELIPE ÁNGELES ESQ. RUIZ CORTÍNEZ S/N, COL. PUEBLO
NUEVO, C.P. 23670, CD. CONSTITUCIÓN, B.C.S.
TEL.: 615 132 1115

CAMPECHE **TORNILLERÍA Y FERRETERÍA AAA**
AV. ÁLVARO OBREGÓN #324, COL. ESPERANZA
C.P. 24080 CAMPECHE, CAMP. TEL.: 981 815 2808

CHIAPAS **FIX FERRETERÍAS**
AV. CENTRAL SUR #27, COL. CENTRO, C.P. 30700,
TAPACHULA, CHIS. TEL.: 962 118 4083

CHIHUAHUA **SUCURSAL CHIHUAHUA**
AV. SILVESTRE TERRAZAS #128-11, PARQUE INDUSTRIAL
BAFAR, CARRETERA MÉXICO CUAUHTÉMOC, C.P. 31415,
CHIHUAHUA, CHIH. TEL.: 614 434 0052

CIUDAD DE MÉXICO **FIX FERRETERÍAS**
EL MONSTRUO DE CORREGIDORA, CORREGIDORA # 35,
COL. CENTRO, C.P. 06060, CUAUHTÉMOC, CDMX.
TEL.: 55 5522 5051 / 5522 4861

COAHUILA **SUCURSAL TORREÓN**
CALLE METAL MECÁNICA #280, PARQUE INDUSTRIAL
ORIENTE, C.P. 27278, TORREÓN, COAH.
TEL.: 871 209 68 23

COLIMA **BOMBAS Y MOTORES BYMTESA DE MANZANILLO**
BLVD. MIGUEL DE LA MADRID #190, COL. 16 DE
SEPTIEMBRE, C.P. 28239, MANZANILLO, COL.
TEL.: 314 332 1986 / 332 8013

DURANGO **TORNILLOS ÁGUILA, S.A. DE C.V.**
MAZURIO #200, COL. LUIS ECHEVERRÍA, DURANGO,
DGO. TEL.: 618 817 1946 / 618 818 2844

ESTADO DE MÉXICO **SUCURSAL CENTRO JILOTEPEC**
PARQUE INDUSTRIAL # 1, COL. PARQUE INDUSTRIAL
JILOTEPEC, JILOTEPEC, EDO. DE MÉX. C.P. 54257
TEL.: 761 782 9101 EXT. 5728 Y 5102

GUANAJUATO **CÍA. FERRETERA NUEVO MUNDO S.A. DE C.V.**
AV. MÉXICO - JAPÓN #225, CD. INDUSTRIAL, C.P. 38010,
CELAYA, GTO. TEL.: 461 617 7578 / 79 / 80 / 88

GUERRERO **CENTRO DE SERVICIO ECLIPSE**
CALLE PRINCIPAL MZ 1 LT. 1, COL. SANTA FE, C.P. 39010,
CHILPANCIÑO, GRO. TEL.: 747 478 5793

HIDALGO **FERREPRECIOS S.A. DE C.V.**
LIBERTAD ORIENTE #304 LOCAL 30, INTERIOR DE PASAJE
ROBLED, COL. CENTRO, C.P. 43600, TULANCINGO,
HGO. TEL.: 775 753 6615 / 775 753 6616

JALISCO **SUCURSAL GUADALAJARA**
AV. ADOLFO B. HORN # 6800, COL. SANTA CRUZ DEL
VALLE, C.P.: 45655, TLAJOMULCO DE ZUÑIGA, JAL.
TEL.: 33 3606 5285 AL 90

MICHOACÁN **FIX FERRETERÍAS**
AV. PASEO DE LA REPÚBLICA #3140-A, COL.
EX-HACIENDA DE LA HUERTA, C.P. 58050, MORELIA,
MICH. TEL.: 443 334 6858

MORELOS **FIX FERRETERÍAS**
CAPITÁN ANZÚRES #95, ESQ. JOSÉ PERDIZ, COL.
CENTRO, C.P. 62740, CUAUTLA, MOR.
TEL.: 735 352 8931

NAVARRIT **HERRAMIENTAS DE TEPIC**
MAZATLAN #117, COL. CENTRO, C.P. 63000, TEPIC, NAY.
TEL.: 311 258 0540

NUEVO LEÓN **SUCURSAL MONTERREY**
CARRETERA LAREDO #300, 1B MONTERREY PARKS,
COLONIA PUERTA DE ANAHUAC, C.P. 66052, ESCOBEDO,
NUEVO LEÓN, TEL.: 81 8352 8791 / 81 8352 8790

OAXACA **FIX FERRETERÍAS**
AV. 20 DE NOVIEMBRE #910, COL. CENTRO, C.P. 68300,
TUXTEPEC, OAX. TEL.: 287 106 3092

PUEBLA **SUCURSAL PUEBLA**
AV. PERIFÉRICO #2-A, SAN LORENZO ALMECATLA,
C.P. 72710, CUAUHTLACINGO, PUE.
TEL.: 222 282 8282 / 84 / 85 / 86

QUERÉTARO **ARU HERRAMIENTAS S.A. DE C.V.**
AV. PUERTO DE VERACRUZ #110, COL. RANCHO DE
ENMEDIO, C.P. 76842, SAN JUAN DEL RÍO, QRO.
TEL.: 427 268 4544

QUINTANA ROO **FIX FERRETERÍAS**
CARRETERA FEDERAL MZ. 46 LT. 3 LOCAL 2, COL. EJIDAL,
C.P. 77710 PLAYA DEL CARMEN, Q.R.
TEL.: 984 267 5140

SAN LUIS POTOSÍ **FIX FERRETERÍAS**
AV. UNIVERSIDAD #1850, COL. EL PASEO, C.P. 78320,
SAN LUIS POTOSÍ, S.L.P. TEL.: 444 822 4341

SINALOA **SUCURSAL CULIACÁN**
AV. JESÚS KUIMATE SUR #4301, COL. HACIENDA DE LA
MORA, C.P. 80143, CULIACÁN, SIN.
TEL.: 667 173 9139 / 173 8400

SONORA **FIX FERRETERÍAS**
CALLE 5 DE FEBRERO #517, SUR LT. 25 MZ. 10, COL.
CENTRO, C.P. 85000, CD. OBREGÓN, SON.
TEL.: 644 413 2392

TABASCO **SUCURSAL VILLAHERMOSA**
CALLE HELIO LOTES 1, 2 Y 3 MZ. #1, COL. INDUSTRIAL,
2A ETAPA, C.P. 86010, VILLAHERMOSA, TAB.
TEL.: 993 353 7244

TAMAULIPAS **VM ORINGS Y REFACCIONES**
CALLE ROSITA #527 ENTRE 20 DE NOVIEMBRE Y GRAL.
RODRÍGUEZ, FRACC. REYNOSA, C.P. 88780, REYNOSA,
TAMS. TEL.: 899 926 7552

TLAXCALA **SERVICIOS Y HERRAMIENTAS INDUSTRIALES**
PABLO SIDAR #132, COL. BARRIO DE SAN BARTOLOMÉ,
C.P. 90970, SAN PABLO DEL MONTE, TLAX.
TEL.: 222 271 7502

VERACRUZ **LA CASA DISTRIBUIDORA TRUPER**
BLVD. PRIMAVERA ESQ. HORTENSIA S/N, COL.
PRIMAVERA C.P. 93308, POZA RICA, VER.
TEL.: 782 823 8100 / 826 8484

YUCATÁN **SUCURSAL MÉRIDA**
CALLE 33 #600 Y 602, LOCALIDAD ITZINCAB Y MULSA,
MPIO. UMAN, C.P. 97390, MÉRIDA, YUC.
TEL.: 999 912 2451

Code	Model	Brand
16610	ROU-N3	TRUPER INDUSTRIAL
16611	ROU-NX2	

Warranty. Duration: 5 year. Coverage: parts, components and workmanship against manufacturing or operating defects, except if used under conditions other than normal; when it was not operated in accordance with the instructive; was altered or repaired by personnel not authorized by **TRUPER®**. To make the warranty valid, only present the product in the establishment where you bought it or in Corregidora 35, Centro, Cuauhtémoc, CDMX, 06060, where you can also purchase parts, components, consumables and accessories. The costs of transportation of the product that derive from its fulfillment of its service network are included. **TRUPER will not require any proof of purchase to make the warranty effective.** Phone number 800-018-7873. Made in China. Imported by TRUPER, S.A. de C.V. Parque Industrial 1, Parque Industrial Jilotepec, Jilotepec, Edo. de Méx. C.P. 54257, Phone number 761 782 9100.

Stamp of the business. Delivery date:

